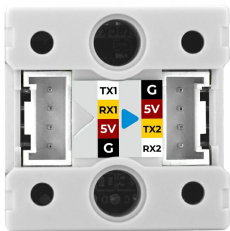
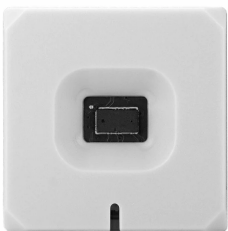
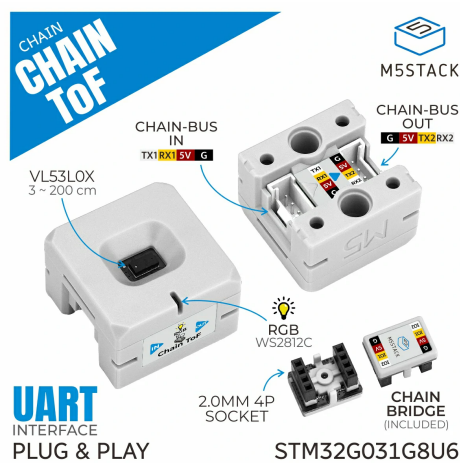


# Chain ToF

SKU:U209





## Description

Chain ToF is a laser ranging sensor node in the M5Stack Chain series. The device integrates a VL53L0C laser ranging module, supporting a distance measurement range of 3 ~ 200cm with an accuracy of  $\pm 3\%$ . It is suitable for short-range non-contact distance measurement and object proximity detection applications. Chain ToF integrates an STM32G031G8U6 core MCU and adopts a UART daisy-chain communication protocol. With two HY2.0-4P expansion interfaces, it can be extended with additional Chain series devices to build richer interactive applications.

## Features

- M5Stack Chain series
- VL53L0C laser ranging module
- 3 ~ 200cm measurement range
- STM32G031G8U6 core MCU
- UART serial daisy-chain communication protocol
- 2 x HY2.0-4P expansion interfaces for extending Chain series devices

## Includes

- 1 x Chain ToF
- 1 x Chain Bridge

## Applications

- Proximity detection
- Distance measurement

## Specifications

Specification	Parameter
MCU	STM32G031G8U6
Laser Module	VL53L0C
Measurement Range	3 ~ 200cm
Measurement Accuracy	±3%
Input Power	DC 5V
Communication Interface	UART
Interface Type	2 x HY2.0-4P
RGB LED	1 x WS2812C
Power Consumption	Stop mode (white RGB on): DC 5V@21.27mA Default mode single measurement: DC 5V@20.26mA Default mode continuous measurement: DC 5V@24.75mA
Operating Temperature	0 ~ 40°C
Product Size	23.9 x 23.9 x 16.0mm
Product Weight	5.8g
Package Size	138.0 x 93.0 x 14.0mm
Gross Weight	9.0g

## Learn

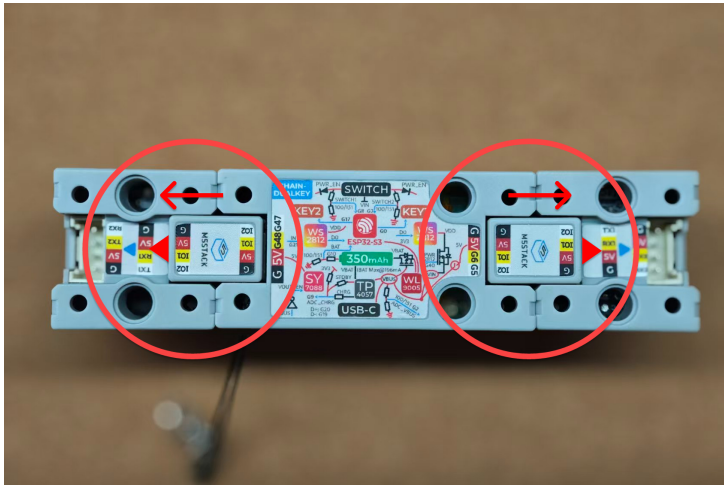
### Test Distance

#### Measurement Environment

Under normal conditions, the maximum test distance is 120cm. To reach 200cm, Long Range mode must be enabled and the measurement must be performed in a dark environment without infrared interference.

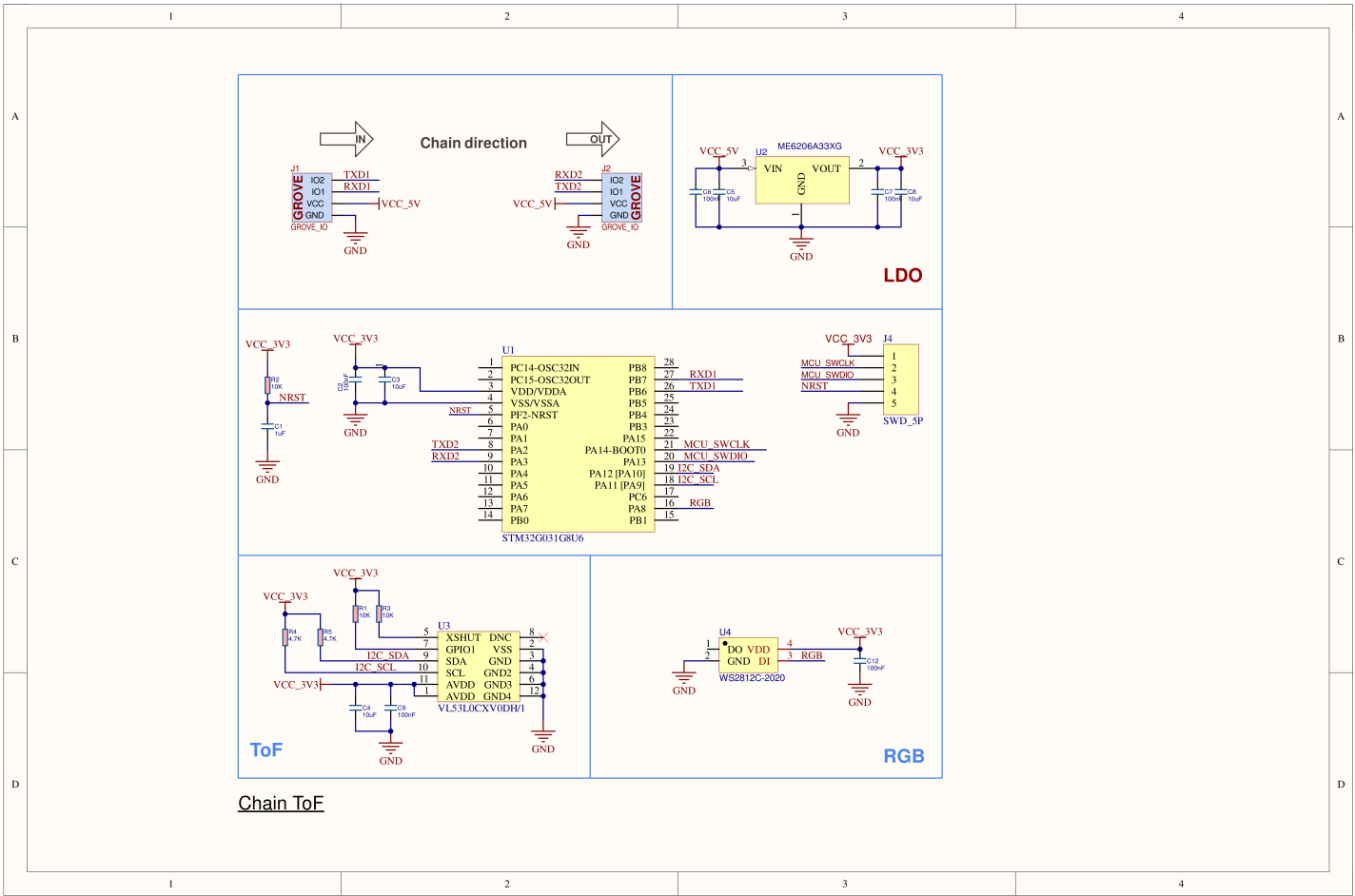
### Connection Instructions

Use the Chain Bridge connector to connect the main controller Chain DualKey and each Chain series input device. Pay attention to the connection direction: the triangular arrow should point from the Chain DualKey main controller outward, as shown below:



## Schematics

Chain ToF Schematics PDF



## PinMap

### RGB LED

STM32G031	PA8
WS2812C	RGB

ToF

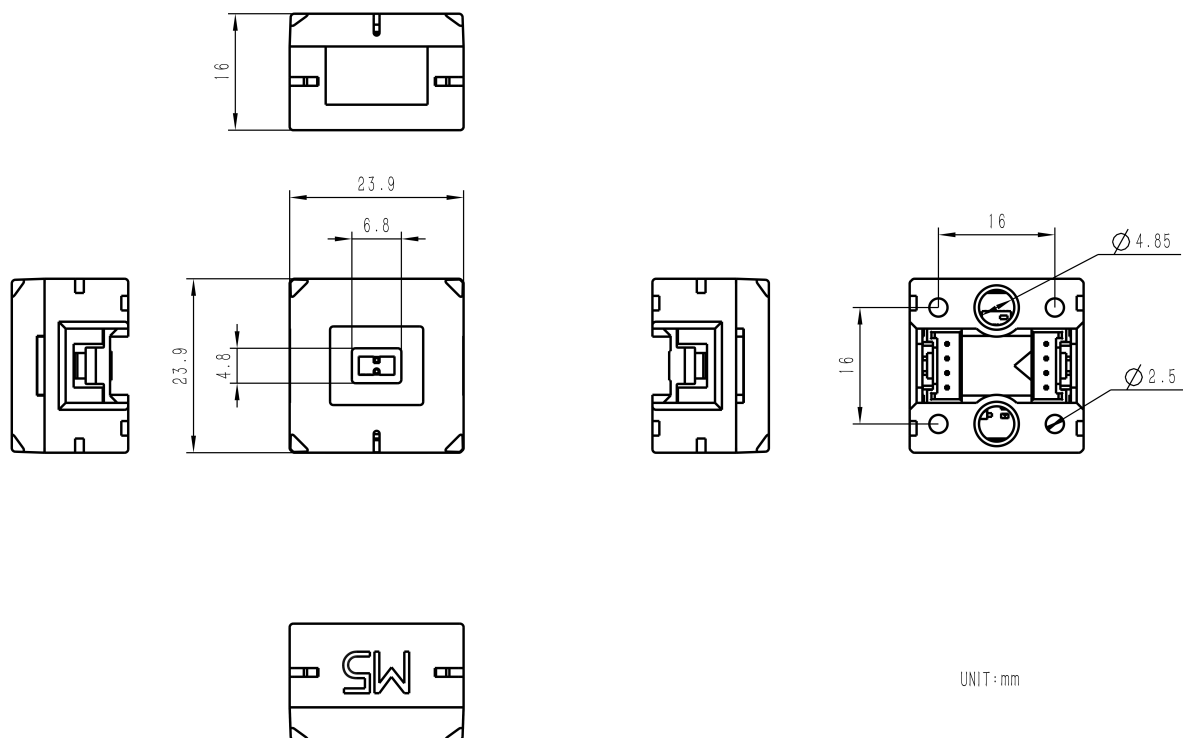
STM32G031	PA11	PA12
VL53L0C	SCL	SDA

UART

STM32G031	PB6	PB7	PA2	PA3
UART1	TXD1	RXD1		
UART2			TXD2	RXD2

Model Size

- [Chain ToF Model Size PDF](#)



## Softwares

### Arduino

- [Chain ToF Arduino Quick Start](#)
- [Chain Series Driver Library](#)

### UiFlow2

- [Chain ToF UiFlow2 Docs](#)

### Internal Firmware

- [Chain ToF Internal Firmware](#)

### Protocol

- [Chain ToF Communication Protocol](#)

## Videos

- [Chain ToF Product Introduction and Feature Demonstration](#)

[U209-Chain-ToF-video-EN.mp4](#)

